

COMPASS

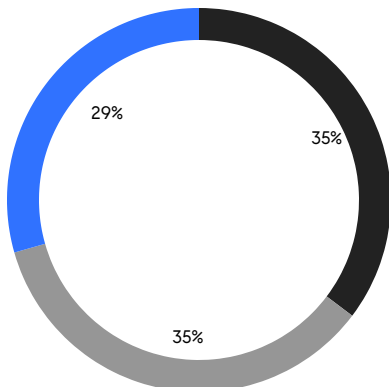
QUEENS WEEKLY LUXURY REPORT



46-30 CENTER BLVD, UNIT 1204

RESIDENTIAL CONTRACTS
\$1.25 MILLION AND UP

- NORTHWESTERN QUEENS
- NORTHEASTERN QUEENS
- CENTRAL QUEENS



17

CONTRACTS SIGNED
THIS WEEK

\$23,351,000

TOTAL CONTRACT VOLUME

The Queens luxury real estate market, defined as all properties priced \$1.25M and above, saw 17 contracts signed this week, made up of 7 condos, and 10 houses. The previous week saw 8 deals. For more information or data, please reach out to a Compass agent.

\$1,373,589

AVERAGE ASKING PRICE

\$1,299,000

MEDIAN ASKING PRICE

\$903

AVERAGE PPSF

0%

AVERAGE DISCOUNT

\$23,351,000

TOTAL VOLUME

112

AVERAGE DAYS ON MARKET

Unit 615 at 2-17 51st Avenue in Long Island City entered contract this week, with a last asking price of \$1,980,000. Built in 2008, this condo unit spans 1,285 square feet with 1 bed and 2 full baths. It features 20-foot ceilings, a primary bedroom with en-suite bath, a large home office, an upper-level mezzanine space, and much more. The building provides a 24-hour concierge, a state-of-the-art fitness center, a lounge and business center, a rooftop entertainment area, and many other amenities.

Also signed this week was 157-40 11th Avenue in Beechhurst, with a last asking price of \$1,658,000. Originally built in 1935, this single-family house spans 2,140 square feet with 4 beds and 2 full baths. It features a finished basement, stunning views, heated bathroom floors, a smart snowmelt system, a large saltwater pool, and much more.

7

CONDO DEAL(S)

0

CO-OP DEAL(S)

10

TOWNHOUSE DEAL(S)

\$1,434,000

AVERAGE ASKING PRICE

\$0

AVERAGE ASKING PRICE

\$1,331,300

AVERAGE ASKING PRICE

\$1,350,000

MEDIAN ASKING PRICE

\$0

MEDIAN ASKING PRICE

\$1,299,000

MEDIAN ASKING PRICE

\$1,264

AVERAGE PPSF

\$662

AVERAGE PPSF

1,143

AVERAGE SQFT

2,201

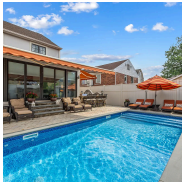
AVERAGE SQFT



2-17 51ST AVE #615

Long Island City

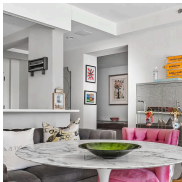
TYPE	CONDO	STATUS	CONTRACT	ASK	\$1,980,000	INITIAL	\$1,980,000
SQFT	1,285	PPSF	\$1,541	BEDS	1	BATHS	2.5
FEES	\$1,255	DOM	36				



157-40 11TH AVE

Whitestone

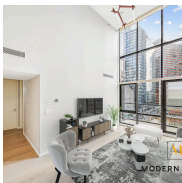
TYPE	TOWNHOUSE	STATUS	CONTRACT	ASK	\$1,658,000	INITIAL	\$1,658,000
SQFT	2,140	PPSF	\$775	BEDS	4	BATHS	2.5
FEES	\$792	DOM	27				



13-11 JACKSON AVE #3B

Long Island City

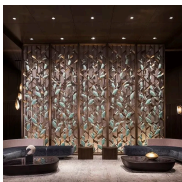
TYPE	CONDO	STATUS	CONTRACT	ASK	\$1,425,000	INITIAL	\$1,420,000
SQFT	1,176	PPSF	\$1,212	BEDS	2	BATHS	2
FEES	\$1,749	DOM	29				



24-12 42ND RD #6E

Long Island City

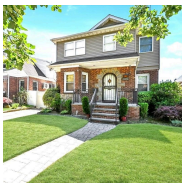
TYPE	CONDO	STATUS	CONTRACT	ASK	\$1,375,000	INITIAL	\$1,375,000
SQFT	N/A	PPSF	N/A	BEDS	2	BATHS	2
FEES	\$583	DOM	50				



133-27 39TH AVE #11M

Flushing

TYPE	CONDO	STATUS	CONTRACT	ASK	\$1,350,000	INITIAL	\$1,350,000
SQFT	953	PPSF	\$1,417	BEDS	2	BATHS	2
FEES	\$1,303	DOM	101				

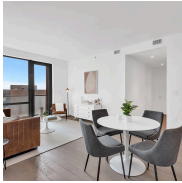


58-24 189TH ST

Auburndale

TYPE	TOWNHOUSE	STATUS	CONTRACT	ASK	\$1,330,000	INITIAL	\$1,398,888
SQFT	2,100	PPSF	\$633	BEDS	6	BATHS	1
FEES	\$1,119	DOM	32				

Compass is a licensed real estate broker and abides by Equal Housing Opportunity laws. All material presented herein is intended for informational purposes only. Information is compiled from sources deemed reliable but is subject to errors, omissions, changes in price, condition, sale, or withdrawal without notice. No statement is made as to the accuracy of any description. All measurements and square footages are approximate. This is not intended to solicit property already listed. Nothing herein shall be construed as legal, accounting or other professional advice outside the realm of real estate brokerage.



107 QUEENS BLVD #8G

Forest Hills

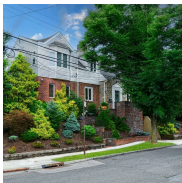
TYPE	CONDO	STATUS	CONTRACT	ASK	\$1,325,000	INITIAL	\$1,325,000
SQFT	1,134	PPSF	\$1,169	BEDS	2	BATHS	2
FEES	\$1,984	DOM	N/A				



43-19 20TH RD

Astoria

TYPE	TOWNHOUSE	STATUS	CONTRACT	ASK	\$1,299,000	INITIAL	\$1,299,000
SQFT	1,324	PPSF	\$982	BEDS	3	BATHS	2.5
FEES	\$6,356	DOM	12				



47-35 GLENWOOD ST

Little Neck

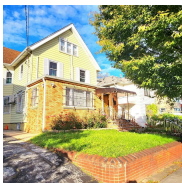
TYPE	TOWNHOUSE	STATUS	CONTRACT	ASK	\$1,299,000	INITIAL	\$1,299,000
SQFT	2,000	PPSF	\$650	BEDS	3	BATHS	2
FEES	\$672	DOM	19				



48-03 195TH ST

Auburndale

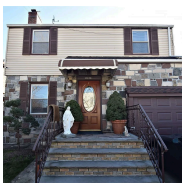
TYPE	TOWNHOUSE	STATUS	CONTRACT	ASK	\$1,299,000	INITIAL	\$1,388,000
SQFT	4,000	PPSF	\$325	BEDS	3	BATHS	2.5
FEES	\$836	DOM	31				



85-56 151ST ST

Briarwood

TYPE	TOWNHOUSE	STATUS	CONTRACT	ASK	\$1,299,000	INITIAL	\$1,379,000
SQFT	2,705	PPSF	\$472	BEDS	5	BATHS	4
FEES	\$738	DOM	156				



101-12 27TH AVE

East Elmhurst

TYPE	TOWNHOUSE	STATUS	CONTRACT	ASK	\$1,299,000	INITIAL	\$1,299,000
SQFT	1,760	PPSF	\$738	BEDS	3	BATHS	2.5
FEES	\$623	DOM	185				

Compass is a licensed real estate broker and abides by Equal Housing Opportunity laws. All material presented herein is intended for informational purposes only. Information is compiled from sources deemed reliable but is subject to errors, omissions, changes in price, condition, sale, or withdrawal without notice. No statement is made as to the accuracy of any description. All measurements and square footages are approximate. This is not intended to solicit property already listed. Nothing herein shall be construed as legal, accounting or other professional advice outside the realm of real estate brokerage.



37-26 32ND ST #4A

Astoria

TYPE	CONDO	STATUS	CONTRACT	ASK	\$1,295,000	INITIAL	\$1,193,000
SQFT	1,137	PPSF	\$1,139	BEDS	1	BATHS	2
FEES	\$1,685	DOM	785				



67-31 INGRAM ST

Forest Hills

TYPE	TOWNHOUSE	STATUS	CONTRACT	ASK	\$1,295,000	INITIAL	\$1,295,000
SQFT	2,143	PPSF	\$605	BEDS	3	BATHS	2.5
FEES	\$820	DOM	67				



11-32 31ST AVE #3B

Astoria

TYPE	CONDO	STATUS	CONTRACT	ASK	\$1,288,000	INITIAL	\$1,288,000
SQFT	1,168	PPSF	\$1,103	BEDS	3	BATHS	2
FEES	\$942	DOM	62				



34-29 72ND ST

Jackson Heights

TYPE	TOWNHOUSE	STATUS	CONTRACT	ASK	\$1,275,000	INITIAL	\$1,275,000
SQFT	N/A	PPSF	N/A	BEDS	3	BATHS	2
FEES	\$650	DOM	71				



246-19 54TH AVE

Little Neck

TYPE	TOWNHOUSE	STATUS	CONTRACT	ASK	\$1,260,000	INITIAL	\$1,260,000
SQFT	1,637	PPSF	\$770	BEDS	4	BATHS	3
FEES	\$683	DOM	114				

Compass is a licensed real estate broker and abides by Equal Housing Opportunity laws. All material presented herein is intended for informational purposes only. Information is compiled from sources deemed reliable but is subject to errors, omissions, changes in price, condition, sale, or withdrawal without notice. No statement is made as to the accuracy of any description. All measurements and square footages are approximate. This is not intended to solicit property already listed. Nothing herein shall be construed as legal, accounting or other professional advice outside the realm of real estate brokerage.